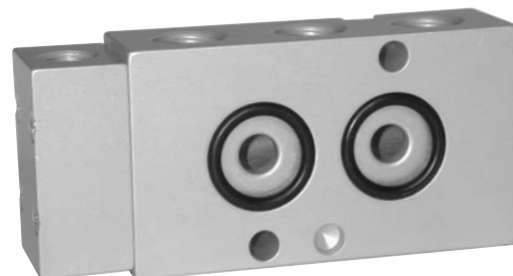


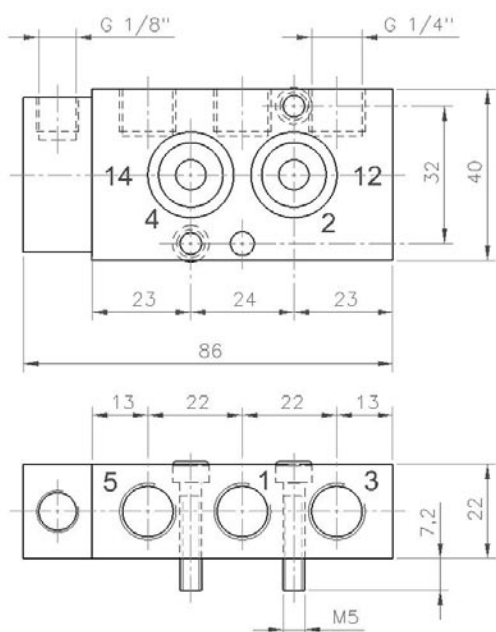
PN 510 701



Pneumatically actuated 5/2-way spool valve with air spring. Interface according to Namur standard.

Port sizes: 1, 3 and 5: G 1/4"
12 and 14: G 1/8"

Delivery includes: 1 pin, 2 screws and 2 O-rings.



Type	Port size	Air flow	Operating press.	Actuation press.	Weight
PN 510 701	G 1/4" - G 1/8"	1250 l/min	2 - 10 bar	the same	0,21 kg