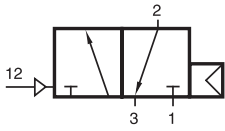
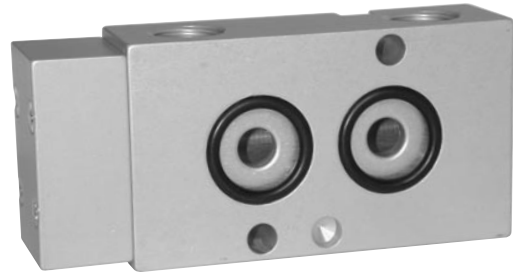


PN 310 701



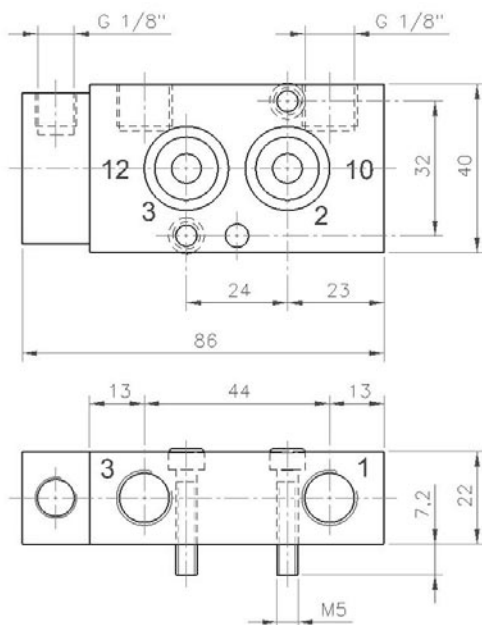
PN 310 701



Pneumatically actuated 3/2-way spool valve with air spring. Interface according to Namur standard with exhaust recirculation.

Port sizes: 1 and 3: G 1/4"
 12: G 1/8"

Delivery includes: 1 pin, 2 screws and 2 O-rings.



Type	Port size	Air flow	Operating press.	Actuation press.	Weight
PN 310 701	G 1/4" - G 1/8"	1250 l/min	2 - 10 bar	the same	0,21 kg

2.7.2.1.1.