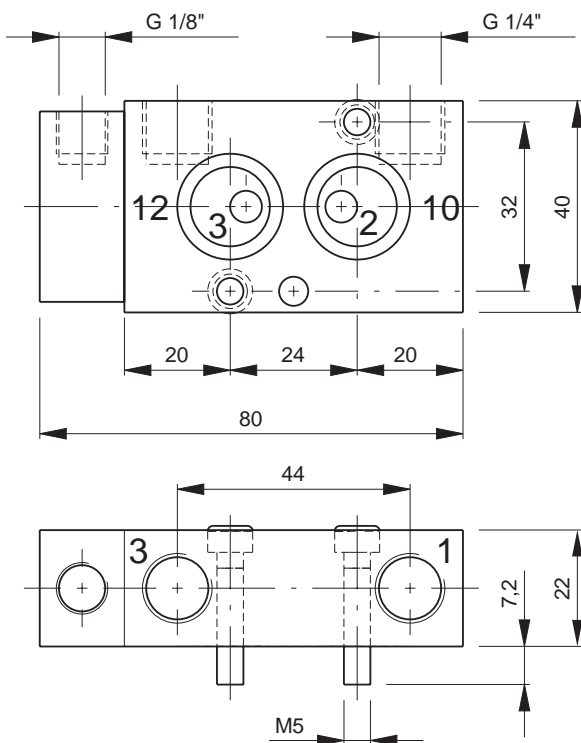


Pneumatically actuated 3/2-way spool valve with air spring. Interface according to Namur standard with exhaust recirculation.

Port sizes: 1 and 3: G 1/4"
12: G 1/8"

Delivery includes: 1 pin, 2 screws and 2 O-rings.

A 30 mm wide valve with a flow of 1 500 l/min is available on request.



Type	Port size	Air flow	Operating press.	Actuation press.	Weight
PN 310 601	G 1/4" - G 1/8"	800 l/min	2 - 10 bar	the same	0,19 kg

2.7.2.1.1.