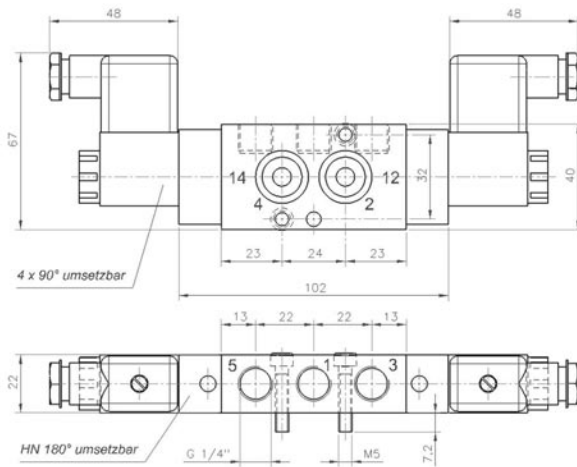


MNH 531 701



5/3-way solenoid valve with spring return to middle position, actuated by permanent signal, normally closed. Interface according to Namur standard.

Available with actuators:
230V/50Hz, 110V/50Hz, 24V/50Hz, 24V=.

The valves are generally equipped with manual override to turn (standard). If requested without manual override, please order MN 531 701.

Also available with manual override to push, then please order MND 531 701.

Obtainable as well with external pilot feed; then please order MENH 531 701.

Delivery includes: 1 pin, 2 screws, 2 O-rings and connector as shown on the photo.

Type	Port size	Air flow	Op. pressure	Power consumption	Weight
MNH 531 701	G 1/4"	1250 l/min	1,5 - 10 bar	3 W = /5 VA ~	0,43 kg