

5/2-way solenoid valve, actuated by permanent signal with air spring. Interface according to Namur standard.

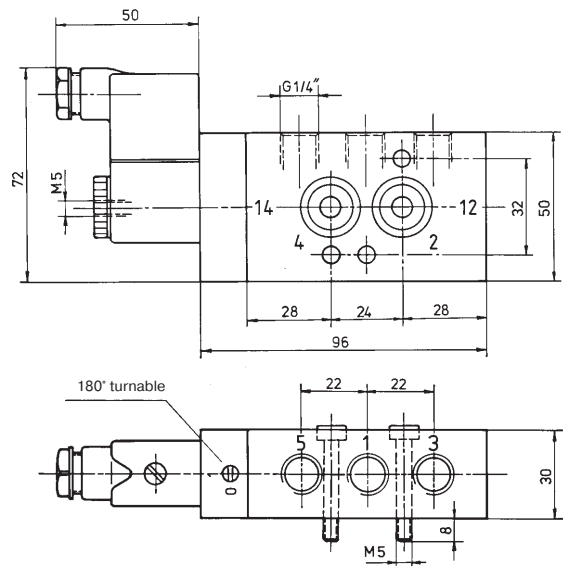
Available with actuators:
230V/50Hz, 110V/50Hz, 24V/50Hz, 24V=.

The valves are generally equipped with manual override. If requested without manual override, please order MN 510 ...

Valve is also available with external pilot feed; then please order MENH 510 ...

Delivery includes: 1 pin, 2 screws, 2 O-rings and connector as shown on the photo.

Explosion proof and intrinsically safe coils are available on request.



Type	Port size	Air flow	Operating press.	Power consumption	kg
MNH 510 601	G 1/4"	800 l/min	1,5 - 10 bar	3 W = /5 VA ~	0,27
MNH 510 801	G 1/4"	1500 l/min	1,5 - 10 bar	3 W = /5 VA ~	0,45