

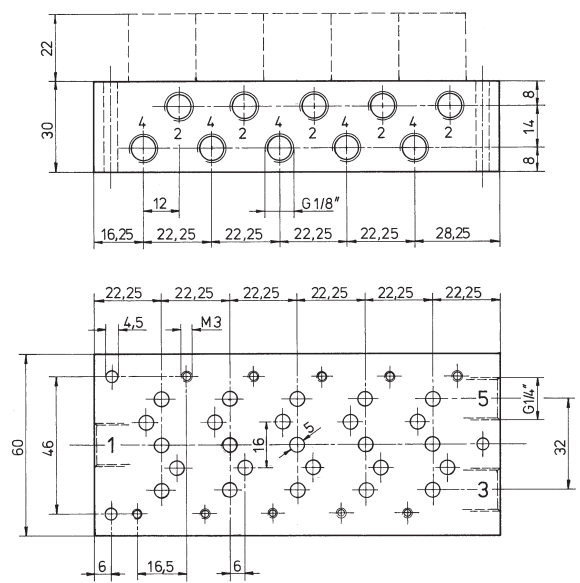
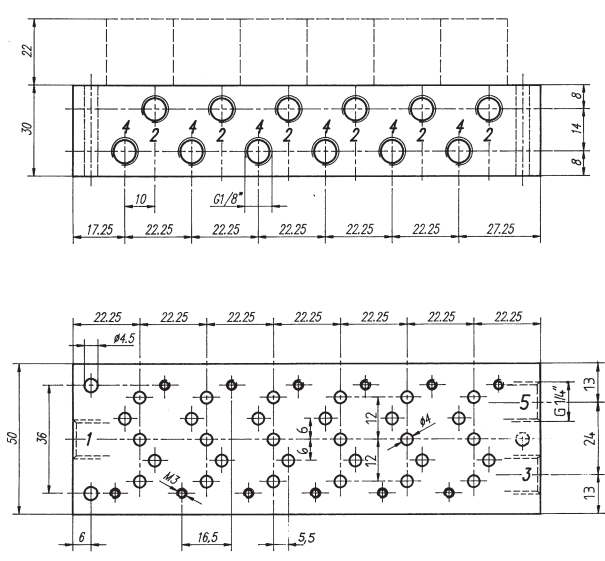
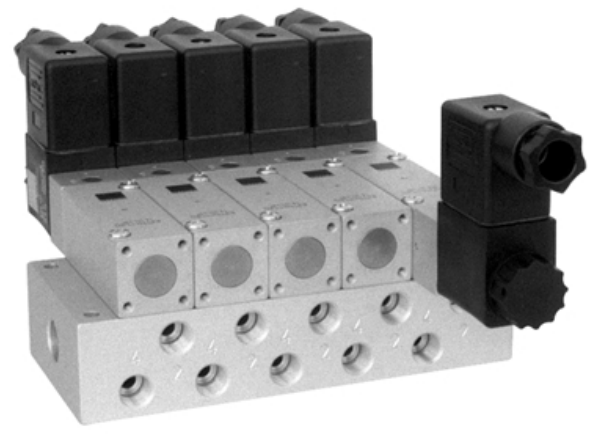
Common connection to port 1 (pressure), 3 (exhaust) and 5 (exhaust). The ports 2 and 4 of the individual valves are also situated in the manifold plate.

The following valves can be assembled to the manifold plate type R 5__ 304:

- 5/2-way MH 510 304 page 2.5.2.2.6.
- 5/2-way MH 520 304 page 2.5.2.2.12.
- 5/3-way MH 53_ 304 page 2.5.3.2.6.

The following valves can be assembled to the manifold plate type R 5__ 504:

- 5/2-way MH 510 504 page 2.5.2.2.6.
- 5/2-way MH 520 504 page 2.5.2.2.12.
- 5/3-way MH 53_ 504 page 2.5.3.2.6.



Type	Stations	Weight
R 502 304	2	0,25 kg
R 503 304	3	0,33 kg
R 504 304	4	0,41 kg
R 505 304	5	0,49 kg
R 506 304	6	0,57 kg
R 508 304	8	0,73 kg
R 510 304	10	0,89 kg
R 512 304	12	1,05 kg

Type	Stations	Weight
R 502 504	2	0,30 kg
R 503 504	3	0,39 kg
R 504 504	4	0,48 kg
R 505 504	5	0,57 kg
R 506 504	6	0,66 kg
R 508 504	8	0,85 kg
R 510 504	10	1,03 kg
R 512 504	12	1,21 kg

Other manifolds are available on request.