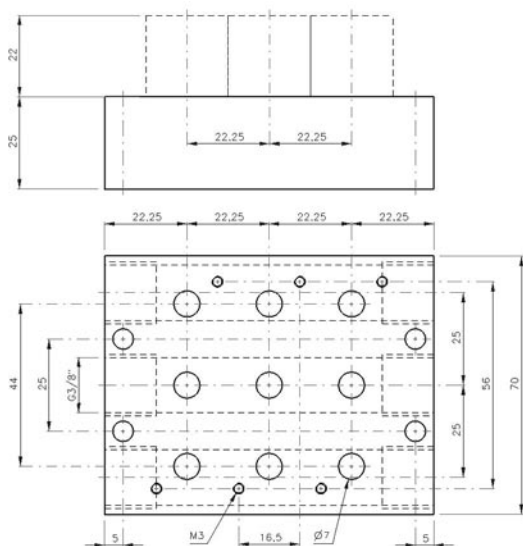


R 5__ 703

Common connection to port 1 (pressure), 3 and 5 (exhaust).

The following valves can be assembled to the manifold plate type R 5__ 703:

- 5/2 way M/MH/MD 510 703 page 2.5.2.2.4.
- 5/2 way M/MH/MD 520 703 page 2.5.2.2.10.
- 5/3 way M/MH/MD 53_ 703 page 2.5.3.2.4.



Type	Stations	Weight
R 502 703	2	0,13 kg
R 503 703	3	0,17 kg
R 504 703	4	0,21 kg
R 505 703	5	0,25 kg
R 506 703	6	0,30 kg
R 508 703	8	0,38 kg
R 510 703	10	0,46 kg
R 512 703	12	0,54 kg
R 514 703	14	0,62 kg
R 516 703	16	0,70 kg