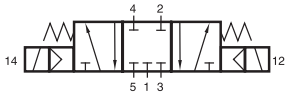
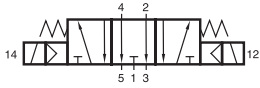


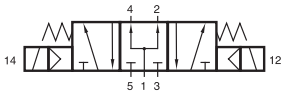
# MD 53\_304/MD 53\_404



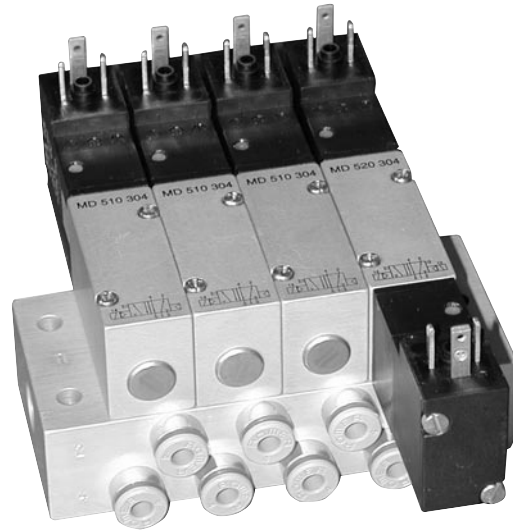
MD 531 304  
MD 531 404



MD 532 304  
MD 532 404



MD 533 304  
MD 533 404



5/3-way solenoid valve with spring return to middle position, actuated by permanent signal. All the ports are in the plate.

Type 531 normally closed

Type 532 normally exhausted

Type 533 normally pressurized

When ordering, please complete the type number by 1, 2 or 3, according to the type in need.

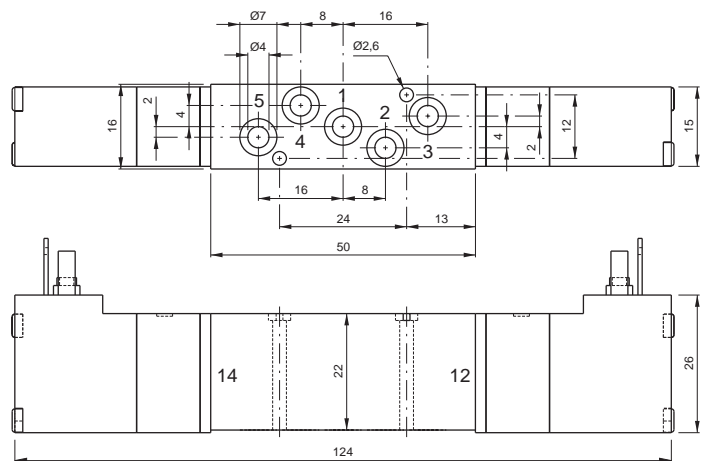
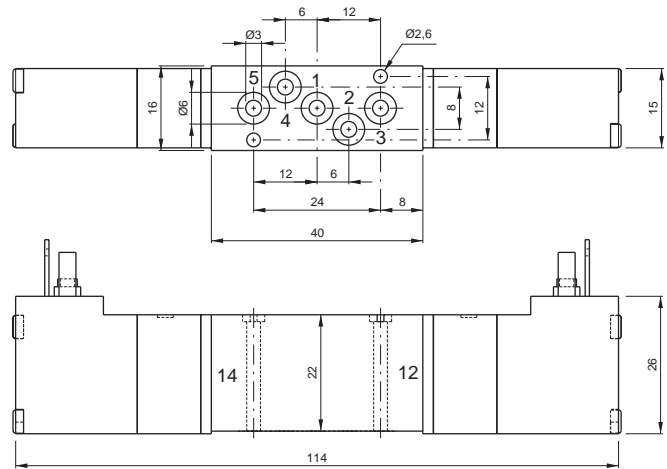
Available with solenoid operators 24 V = or 230 V ~.

Valves are generally equipped with manual override to push.

Manifolds are described on page 2.6.2.4.

Blanking plates are also available, type BP 5 304 or BP 5 404.

Mounting screws and seals are included.



Type	Width [mm]	Port size 1 to 5	Air flow [l/min]	Operating pressure	Power consumption
MD 53_304	16	drilling 3,0	280	3-10 bar	1.9 W / 3.6 VA
MD 53_404	16	drilling 4,0	450	3-10 bar	1.9 W / 3.6 VA

## 2.5.3.2.5.