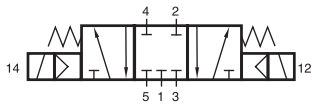
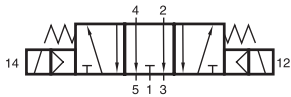


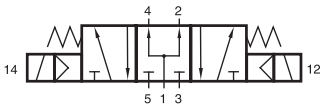
MH 53_ 503/MH 53_ 803



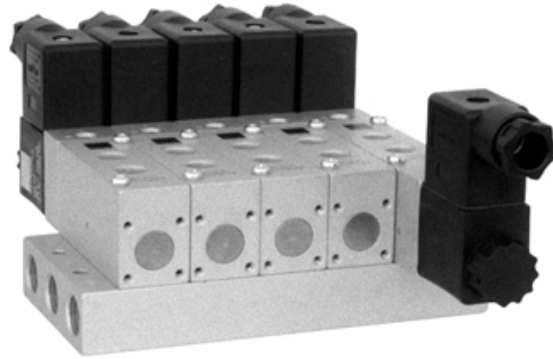
MH 531 503
MH 531 803



MH 532 503
MH 532 803



MH 533 503
MH 533 803

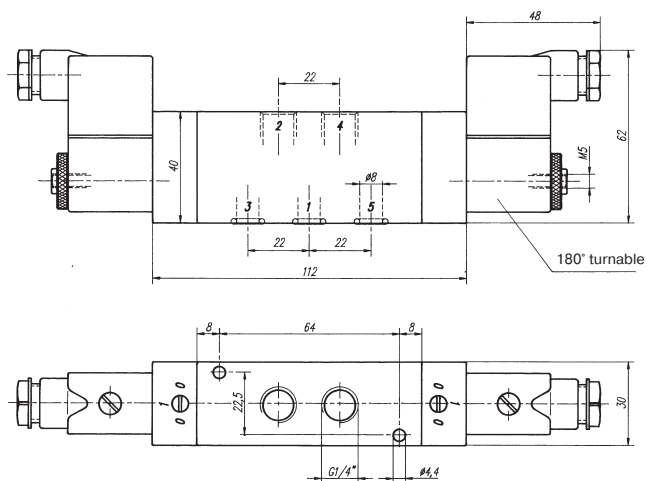
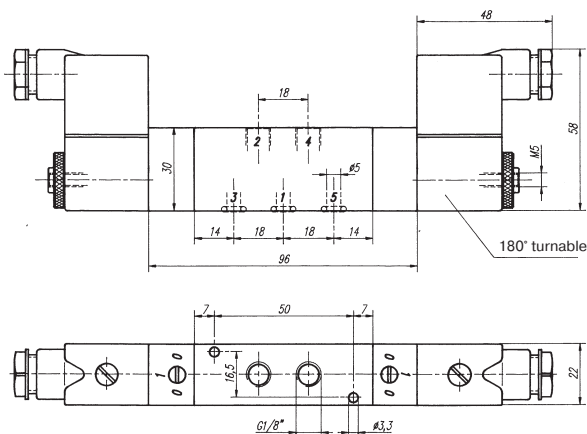


5/3-way solenoid valve with spring return to middle position, actuated by permanent signal. Ports 2 and 4 are at the valve, ports 1, 3 and 5 at the manifold plate.

- Type 531 normally closed
- Type 532 normally exhausted
- Type 533 normally pressurized

When ordering, please complete the type number by 1, 2 or 3, according to the type in need.

Available with solenoid operators:
230V/50Hz, 110V/50Hz, 24V/50Hz, 24V=.



Valves are generally equipped with manual override. If requested without manual override, please order M 53_ ...

Manifolds are described on page 2.6.2.2.

Blanking plates are also available, type BP 5 503 or 5 803.

Mounting screws, seals and connectors as shown on the photo are included.

Type	Port size	Air flow	Operating press.	Power consumption	Weight
MH 53_ 503	G 1/8"	650 l/min	3 - 10 bar	3 W = /5 VA ~	0,31 kg
MH 53_ 803	G 1/4"	1450 l/min	3 - 10 bar	3 W = /5 VA ~	0,52 kg

2.5.3.2.3.