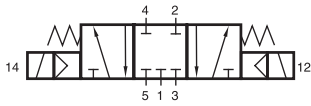
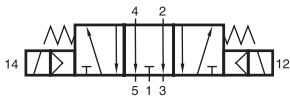


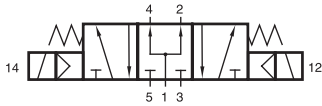
# MH 53\_ 501/MH 53\_ 801/MH 53\_ 121



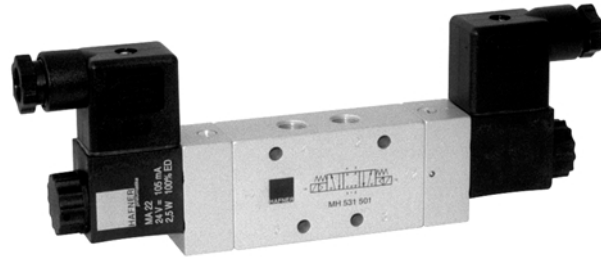
MH 531 501  
MH 531 801  
MH 531 121



MH 532 501  
MH 532 801  
MH 532 121



MH 533 501  
MH 533 801  
MH 533 121



5/3-way solenoid valve with spring return to middle position, actuated by permanent signal.

Type 531 normally closed

Type 532 normally exhausted

Type 533 normally pressurized

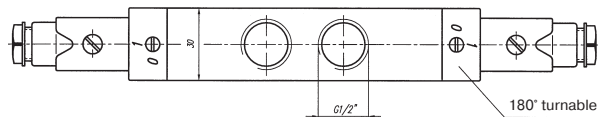
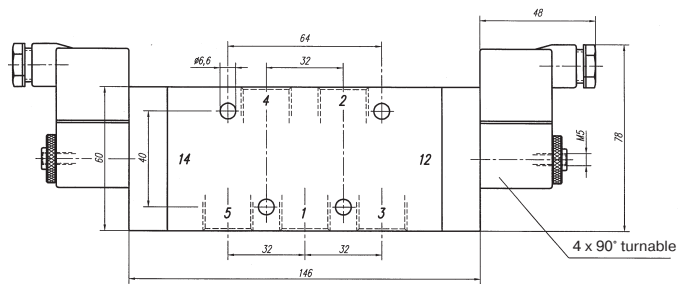
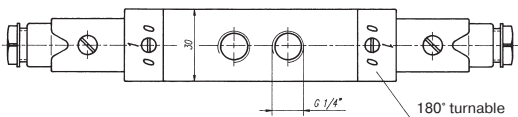
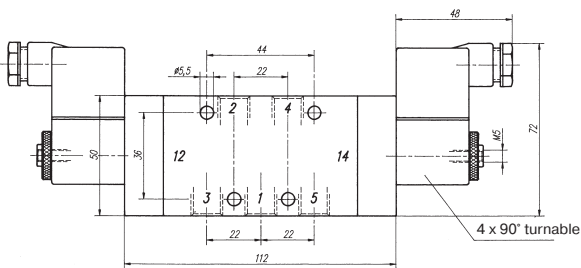
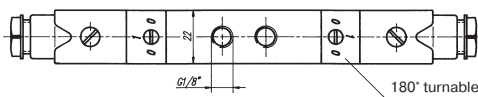
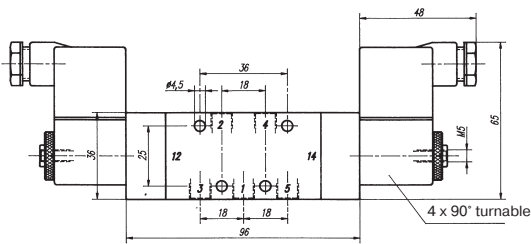
When ordering, please complete the type number by 1, 2 or 3, according to the type in need.

Available with solenoid operators:  
230V/50Hz, 110V/50Hz, 24V/50Hz, 24V =.

Valves are generally equipped with manual override. If requested without manual override, please order M 53. ...

Valve is also available with external pilot feed, then please order MEH 53\_ \_.

Connectors as shown on the photo are included.



Type	Port size	Air flow	Operating press.	Power consumption	Weight
MH 53_ 501	G 1/8"	650 l/min	3 - 10 bar	3 W = /5 VA ~	0,34 kg
MH 53_ 801	G 1/4"	1450 l/min	3 - 10 bar	3 W = /5 VA ~	0,59 kg
MH 53_ 121	G 1/2"	3000 l/min	3 - 10 bar	3 W = /5 VA ~	0,81 kg

## 2.5.3.1.3.