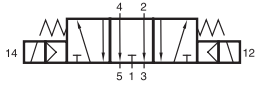
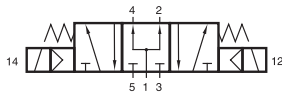


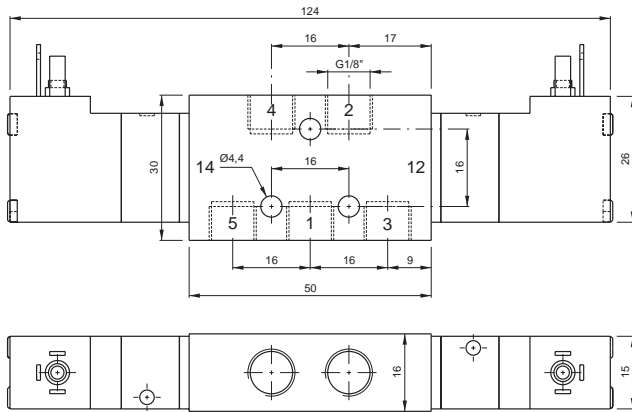
MD 531 401
MD 531 461



MD 532 401
MD 532 461



MD 533 401
MD 533 461



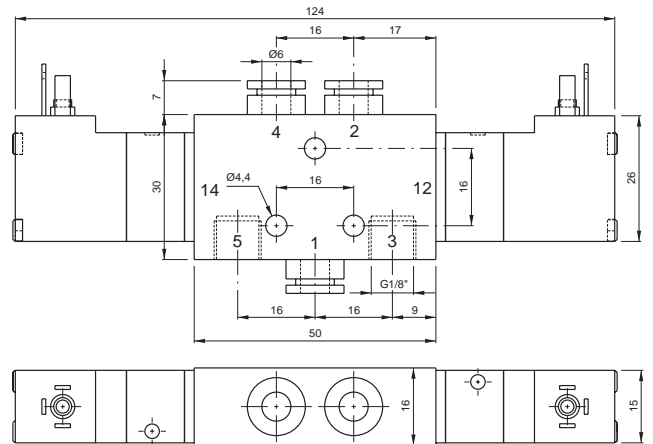
5/3-way solenoid valve with spring return to middle position, actuated by permanent signal.

- Type 531 normally closed
- Type 532 normally exhausted
- Type 533 normally pressurized

When ordering, please complete the type number by 1,2 or 3, according to the type in need.

Available with solenoid operators 24 V = or 230 V ~.

Valves are generally equipped with manual override to push.



Type	Width [mm]	Port size 1, 2, 4	Air flow [l/min]	Operating pressure	Power consumption
MD 53_401	16	G 1/8"	450	3-10 bar	1.9 W / 3.6 VA
MD 53_461	16	6 mm p.i.f.	450	3-10 bar	1.9 W / 3.6 VA