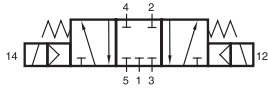
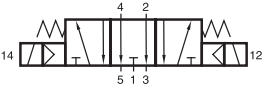


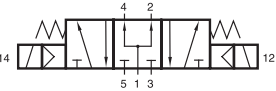
MD 53_301/MD 53_341



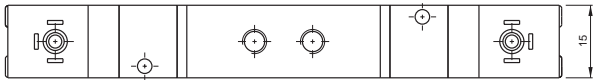
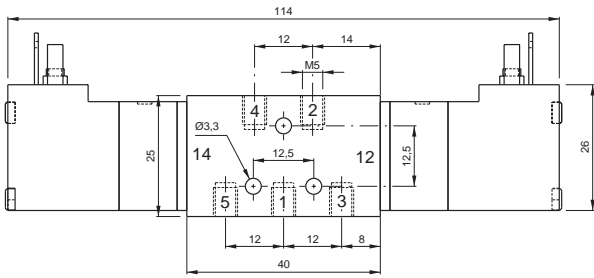
MD 531 301
MD 531 341



MD 532 301
MD 532 341



MD 533 301
MD 533 341



5/3-way solenoid valve with spring return to middle position, actuated by permanent signal.

Type 531 normally closed

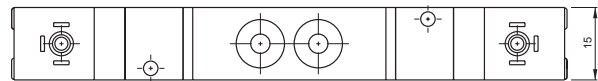
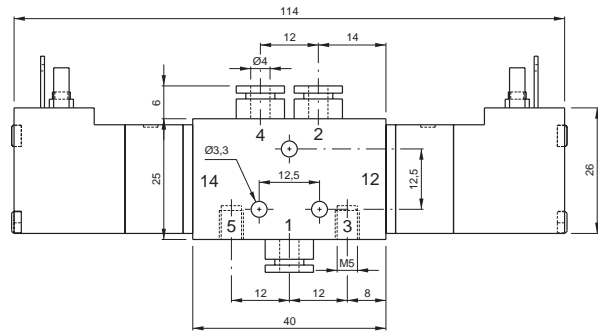
Type 532 normally exhausted

Type 533 normally pressurized

When ordering, please complete the type number by 1, 2 or 3, according to the type in need.

Available with solenoid operators 24 V = or 230 V ~.

Valves are generally equipped with manual override to push.



| Type | Width [mm] | Port size 1, 2, 4 | Air flow [l/min] | Operating pressure | Power consumption |
|-----------|---------------|----------------------|---------------------|-----------------------|-------------------|
| MD 53_301 | 15 | M5 | 280 | 3-10 bar | 1.9 W / 3.6 VA |
| MD 53_341 | 15 | 4 mm p.i.f. | 280 | 3-10 bar | 1.9 W / 3.6 VA |

2.5.3.1.1.