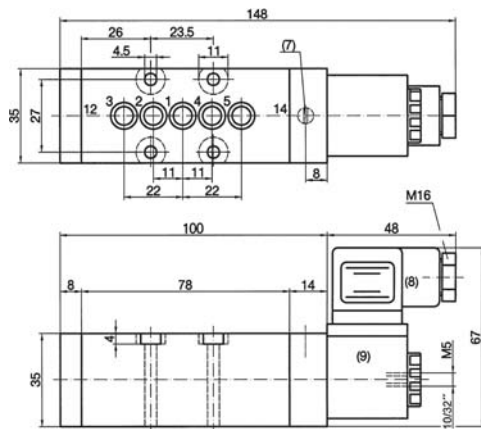


MH 510 704 J



5/2-way solenoid valve with air spring, actuated by permanent signal.

All ports are in the manifold plate.

Available with solenoid operators:  
230V/50Hz, 110V/50Hz, 24V/50Hz, 24V=.

Valves are generally equipped with manual override. If requested without manual override, please order M 510 704 J.

Also available with manual override to push; then please order MD 510 704 J.

Blanking plates are also available;  
Type BP 5 703.

Mounting screws, seals and connectors as shown on the photo are included.

Type	Port size	Air flow	Operating press.	Power consumption	Weight
MH 510 704 J	7mm	1250 l/min	1 - 10 bar	3 W = /5Va ~	0,55 kg