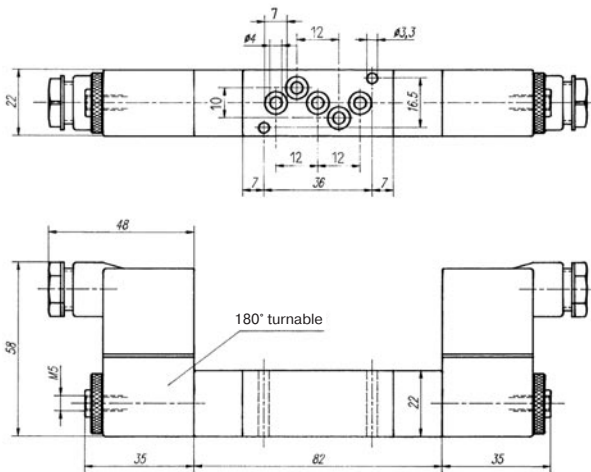
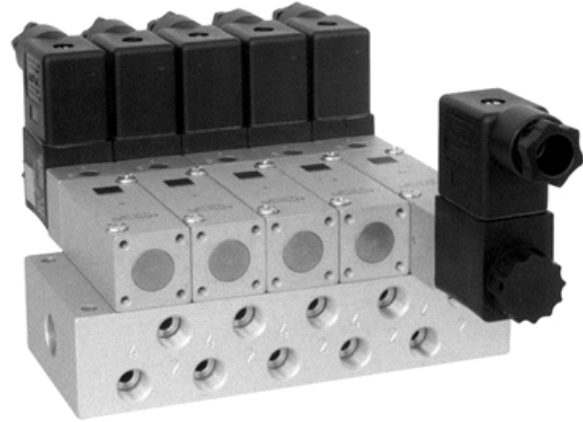


MH 520 304  
MH 520 504



5/2-way double solenoid valve, actuated by impulse. Position is kept until an electrical signal is applied to the opposite side, even when not attached to electrical source. All the ports are in the plate.

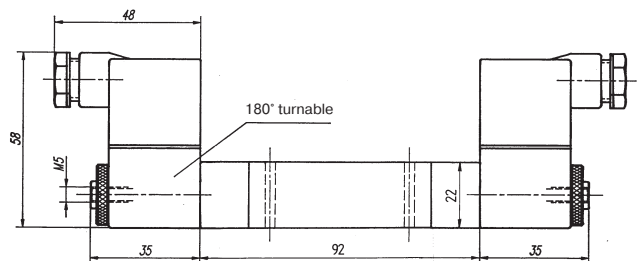
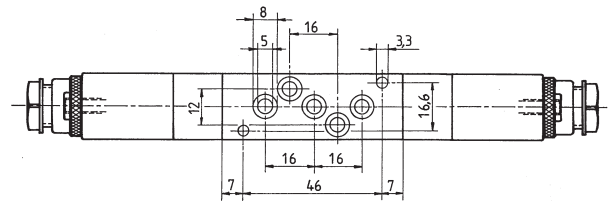
Available with solenoid operators:  
230V/50Hz, 110V/50Hz, 24V/50Hz, 24V=, 12V=.

Valves are generally equipped with manual override. If requested without manual override, please order M 520 ...

Manifolds are displayed on page 2.6.2.5.

Blanking plates are also available, type BP 5 304 or BP 5 504.

Mounting screws, seals and connectors as shown on the photo are included.



Type	Port size	Air flow	Operating press.	Power consumption	Weight
MH 520 304	drilling 3 mm	220 l/min	2 - 10 bar	3 W = /5 VA ~	0,24 kg
MH 520 504	drilling 5 mm	650 l/min	2 - 10 bar	3 W = /5 VA ~	0,26 kg