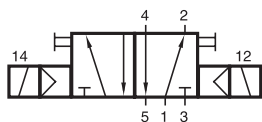
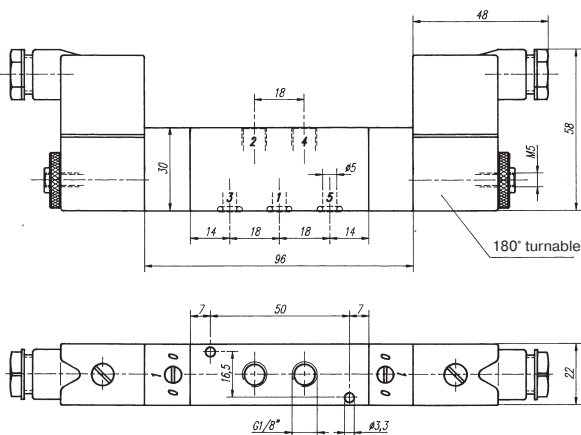
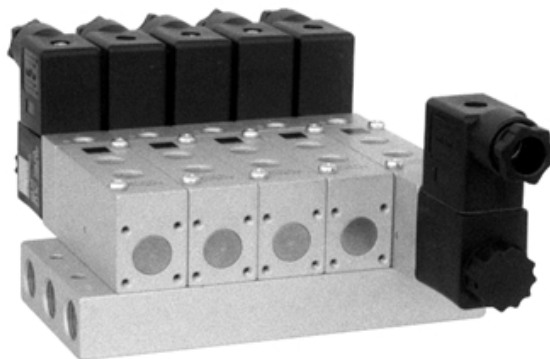


MH 520 503/MH 520 803



MH 520 503
MH 520 803



5/2-way double solenoid valve, actuated by impulse. Position is kept until an electrical signal is applied to the opposite side, even when not attached to electrical source. Ports 2 and 4 are at the valve; 1, 3 and 5 at the manifold plate.

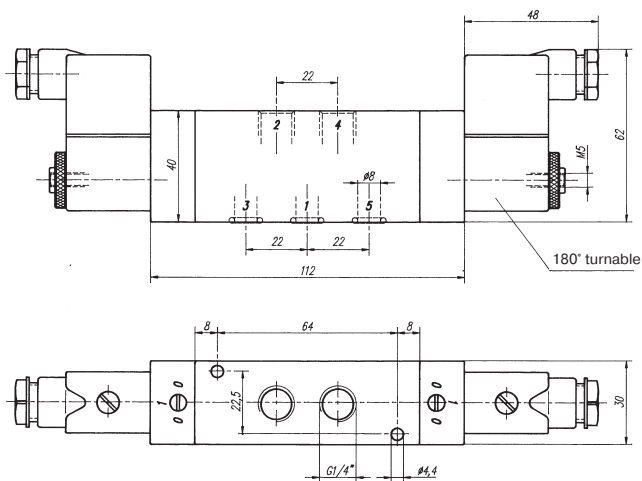
Available with solenoid operators:
230V/50Hz, 110V/50Hz, 24V/50Hz, 24V=.

Valves are generally equipped with manual override. If requested without manual override, please order M 520 ...

Manifolds are displayed on page 2.6.2.2.

Blanking plates are also available, type BP 5 503 or BP 5 803.

Mounting screws, seals and connectors as shown on the photo are included.



Type	Port size	Air flow	Operating press.	Power consumption	Weight
MH 520 503	G 1/8"	650 l/min	2 - 10 bar	3 W = /5 VA ~	0,31 kg
MH 520 803	G 1/4"	1450 l/min	1,5 - 10 bar	3 W = /5 VA ~	0,51 kg

2.5.2.2.9.