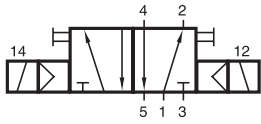
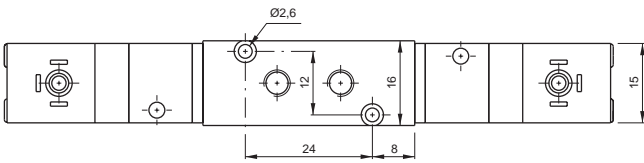
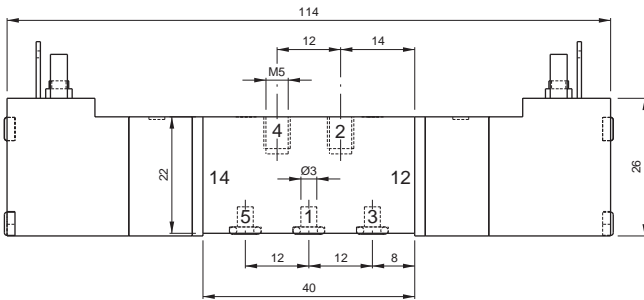
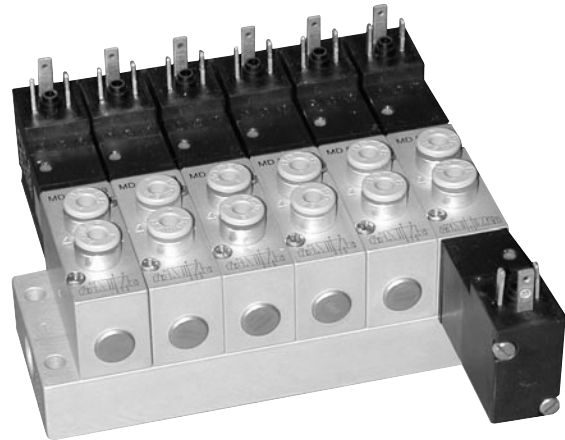


MD 520 303/MD 520 343



MD 520 303
MD 520 343



5/2-way double solenoid valve, actuated by impulse. Position is kept until an electrical signal is applied to the opposite side, even when not attached to electrical source. Ports 2 and 4 are at the valve; 1, 3 and 5 at the manifold plate.

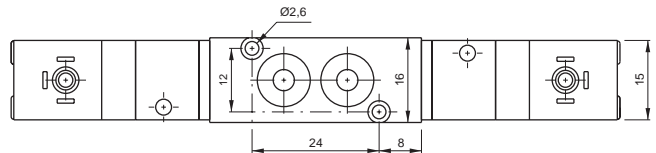
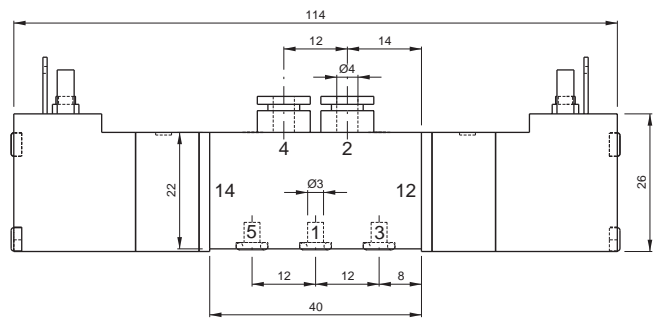
Available with solenoid operators 24 V = or 230 V ~.

Valves are generally equipped with manual override to push.

Manifolds are displayed on page 2.6.2.1.

Blanking plates are also available; type BP 5 303.

Mounting screws and seals are included.



Type	Width [mm]	Port size	Air flow [l/min]	Operating pressure	Power consumption
MD 520 303	16	M5	280	3-10 bar	1.9 W / 3.6 VA
MD 520 343	16	4 mm p.i.f.	280	3-10 bar	1.9 W / 3.6 VA

2.5.2.2.7.