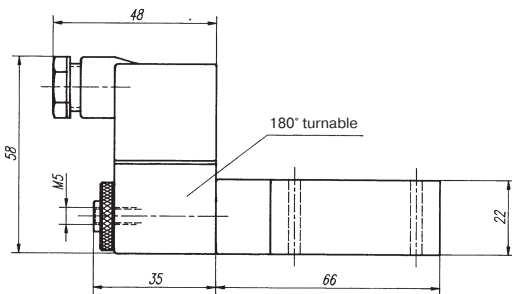
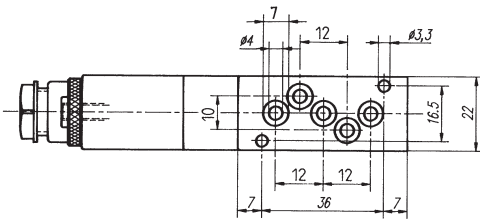
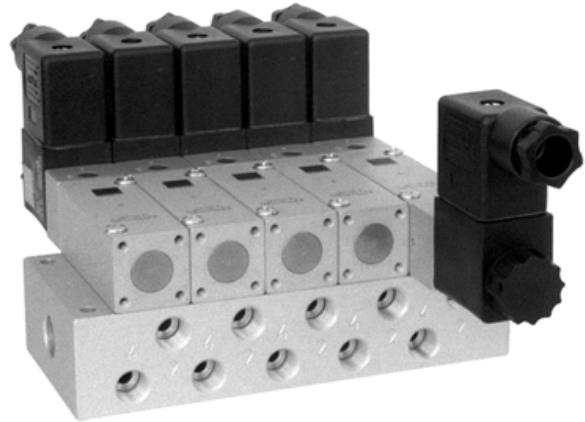


MH 510 304
MH 510 504



5/2-way solenoid valve with air spring, actuated by permanent signal. All ports are in the plate.

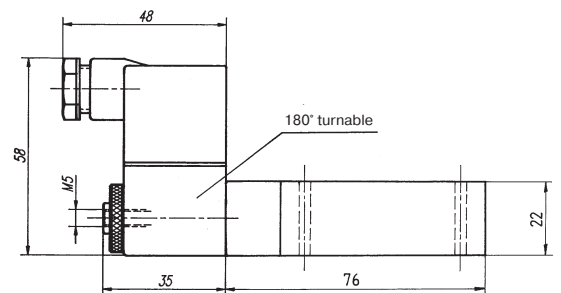
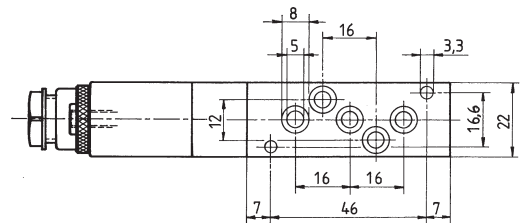
Available with solenoid operators:
230V/50Hz, 110V/50Hz, 24V/50Hz, 24V=.

Valves are generally equipped with manual override. If requested without manual override, please order M 510 ...

Manifolds are displayed on page 2.6.2.5.

Blanking plates are also available, type BP 5 304 or BP 5 504.

Mounting screws, seals and connectors as shown on the photo are included.



Type	Port size	Air flow	Operating press.	Power consumption	Weight
MH 510 304	drilling 3 mm	220 l/min	2 - 10 bar	3 W = /5 VA ~	0,16 kg
MH 510 504	drilling 5 mm	650 l/min	2 - 10 bar	3 W = /5 VA ~	0,18 kg