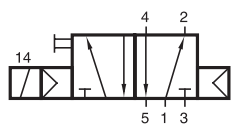
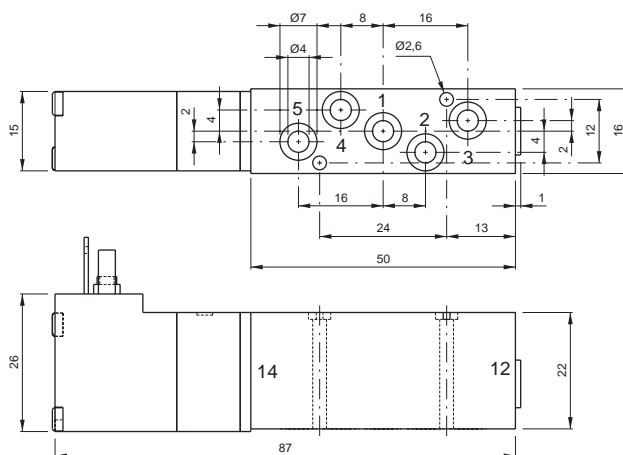
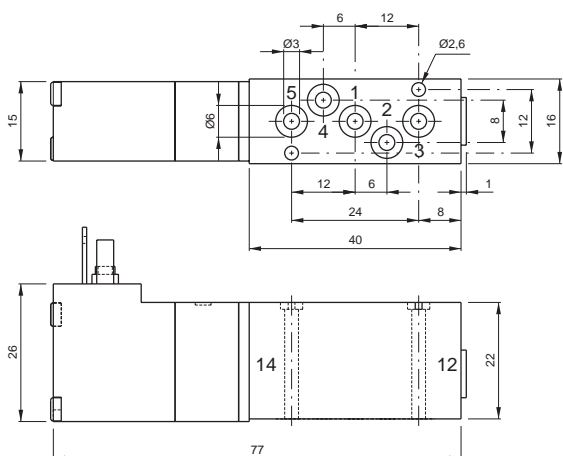
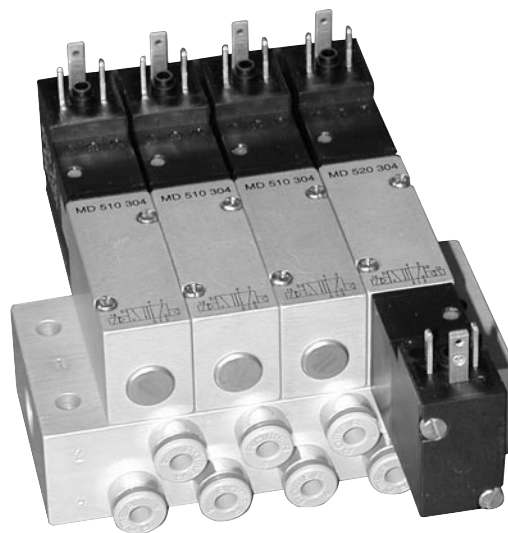


MD 510 304/MD 510 404



MD 510 304
MD 510 404



5/2-way solenoid valve with air spring, actuated by permanent signal. All the ports are in the plate.

Available with solenoid operators 24 V = or 230 V ~.

Valves are generally equipped with manual override to push.

Manifolds are displayed on page 2.6.2.4.

Blanking plates are also available, type BP 5 304 or BP 5 404.

Mounting screws and seals are included.

Type	Width [mm]	Port size 1 to 5	Air flow [l/min]	Operating pressure	Power consumption
MD 510 304	16	drilling 3,0	280	3-10 bar	1.9 W / 3.6 VA
MD 510 404	16	drilling 4,0	450	3-10 bar	1.9 W / 3.6 VA

2.5.2.2.5.