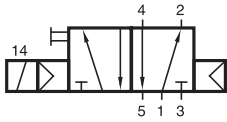
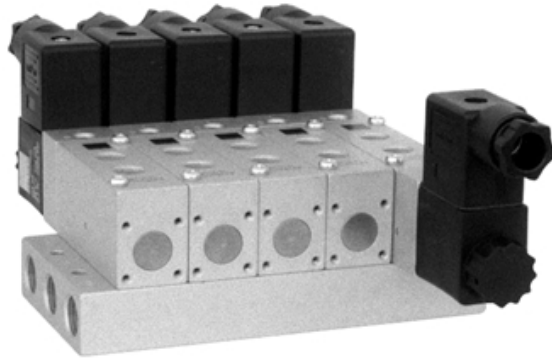


MH 510 503/MH 510 803



MH 510 503
MH 510 803

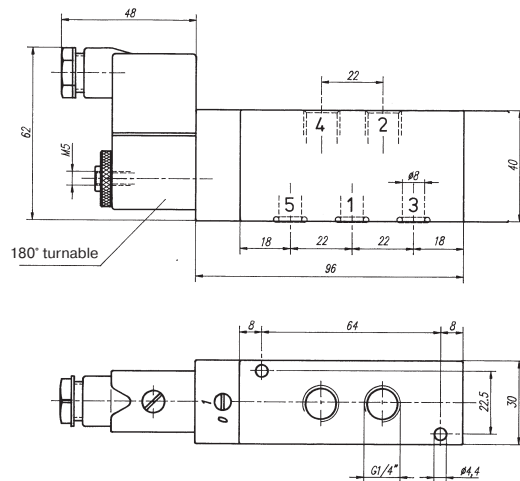
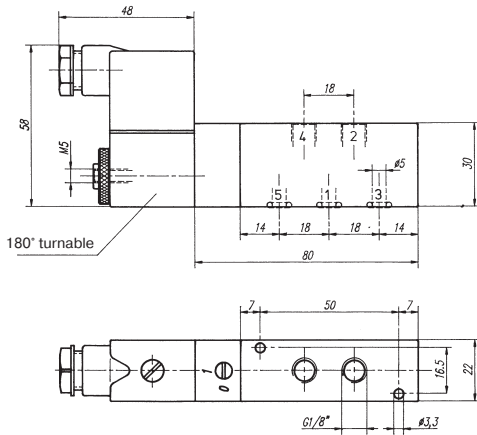


5/2-way solenoid valve with air spring, actuated by permanent signal. Ports 2 and 4 are at the valve; 1, 3 and 5 at the manifold plate.

Available with solenoid operators:
230V/50Hz, 110V/50Hz, 24V/50Hz, 24V=.

Valves are generally equipped with manual override. If requested without manual override, please order M 510 ...

Manifolds are displayed on page 2.6.2.2.



Blanking plates are also available; type BP 5 503 or BP 5 803.

Mounting screws, seals and connectors as shown on the photo are included.

Type	Port size	Air flow	Operating press.	Power consumption	Weight
MH 510 503	G 1/8"	650 l/min	2 - 10 bar	3 W = /5 VA ~	0,21 kg
MH 510 803	G 1/4"	1450 l/min	1,5 - 10 bar	3 W = /5 VA ~	0,36 kg

2.5.2.2.3.