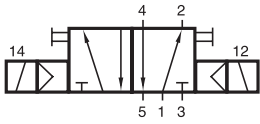
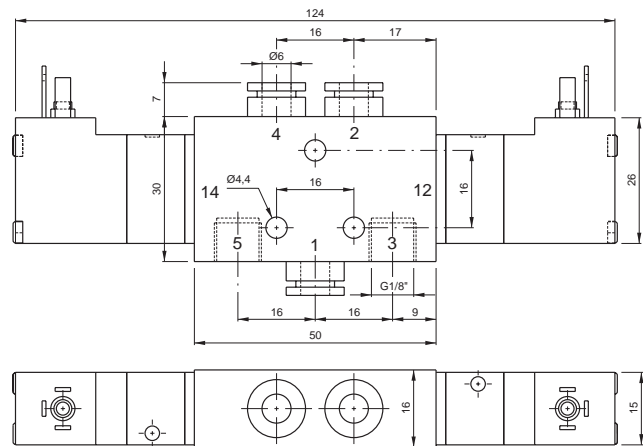
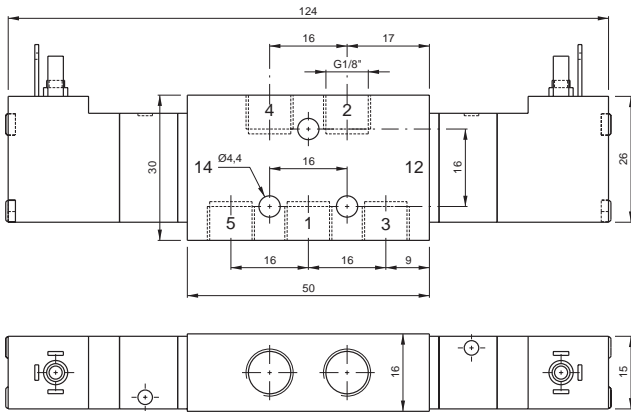


MD 520 401/MD 520 461



MD 520 401
MD 520 461



5/2-way spool valve, actuated by impulse. Position is kept until an electrical signal is applied to the opposite side, even when not attached to electrical source.

Available with solenoid operators 24 V = or 230 V ~.

Valves are generally equipped with manual override to push.

Type	Width [mm]	Port size	Air flow [l/min]	Operating pressure	Power consumption
MD 520 401	16	G 1/8"	450	3-10 bar	1.9 W / 3.6 VA
MD 520 461	16	6 mm p.i.f.	450	3-10 bar	1.9 W / 3.6 VA

2.5.2.1.7.