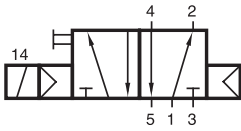
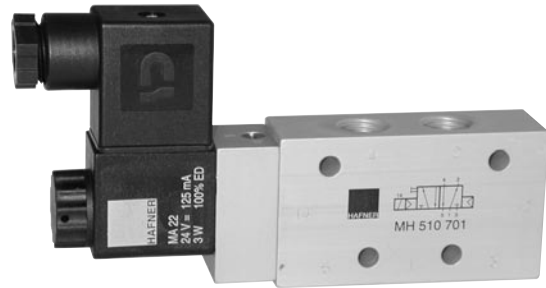


MH 510 701/MH 510 101



MH 510 701
MH 510 101



5/2-way solenoid valve with air spring, actuated by permanent signal.

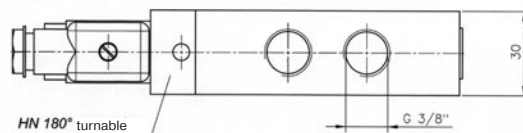
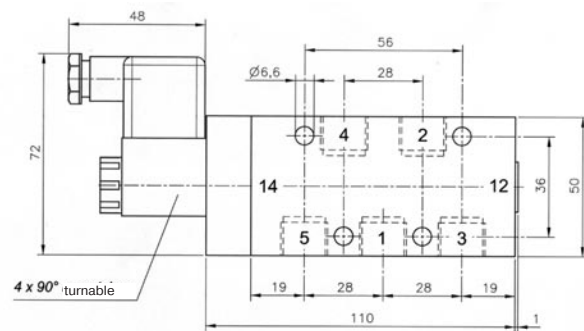
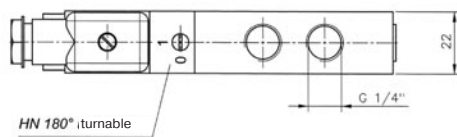
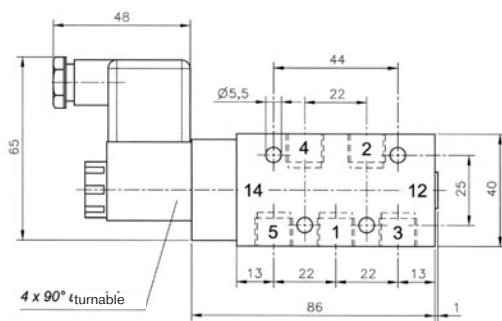
Available with solenoid operators:
230V/50Hz, 110V/50Hz, 24V/50Hz, 24V=.

Valves are generally equipped with manual override. If requested without manual override, please order M 510 ...

Also available with manual override to push; then please order MD 510 ...

Valve is also available with external pilot feed, then please order MEH 510 ...

Connectors as shown on the photo are included.



Type	Port size	Air flow	Operating press.	Power consumption	Weight
MH 510 701	G 1/4"	1250 l/min	2 - 10 bar	3 W = /5 VA ~	0,22 kg
MH 510 101	G 3/8"	2250 l/min	1,5 - 10 bar	3 W = /5 VA ~	0,42 kg

2.5.2.1.5.