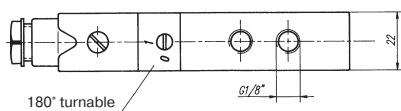
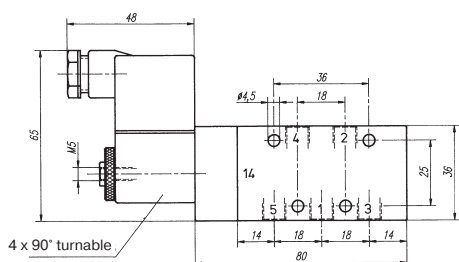
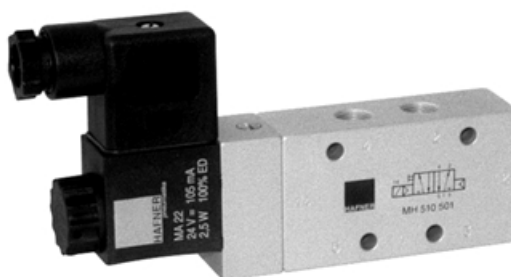


MH 510 501
MH 510 801
MH 510 121



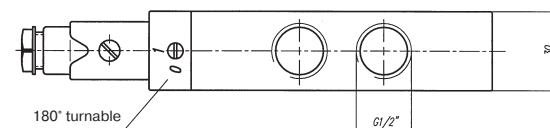
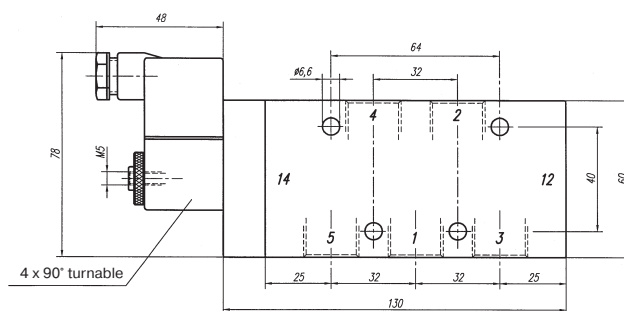
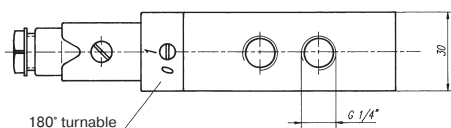
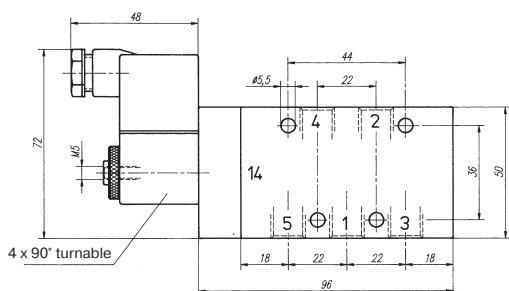
5/2-way solenoid valve with air spring, actuated by permanent signal.

Available with solenoid operators:
230V/50Hz, 110V/50Hz, 24V/50Hz, 24V=.

Valves are generally equipped with manual override. If requested without manual override, please order M 510 ...

Valve is also available with external pilot feed, then please order MEH 510 ...

Connectors as shown on the photo are included.



Type	Port size	Air flow	Operating press.	Power consumption	Weight
MH 510 501	G 1/8"	650 l/min	2 - 10 bar	3 W = /5 VA ~	0,23 kg
MH 510 801	G 1/4"	1450 l/min	1,5 - 10 bar	3 W = /5 VA ~	0,44 kg
MH 510 121	G 1/2"	3000 l/min	1 - 10 bar	3 W = /5 VA ~	0,64 kg