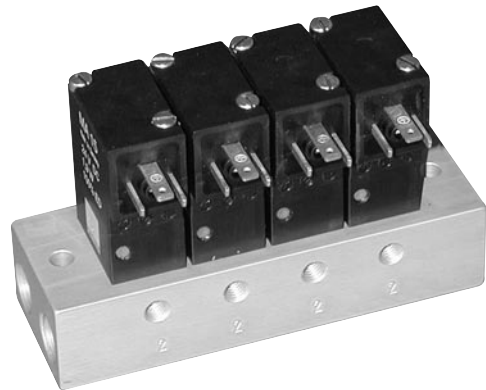


MD 310

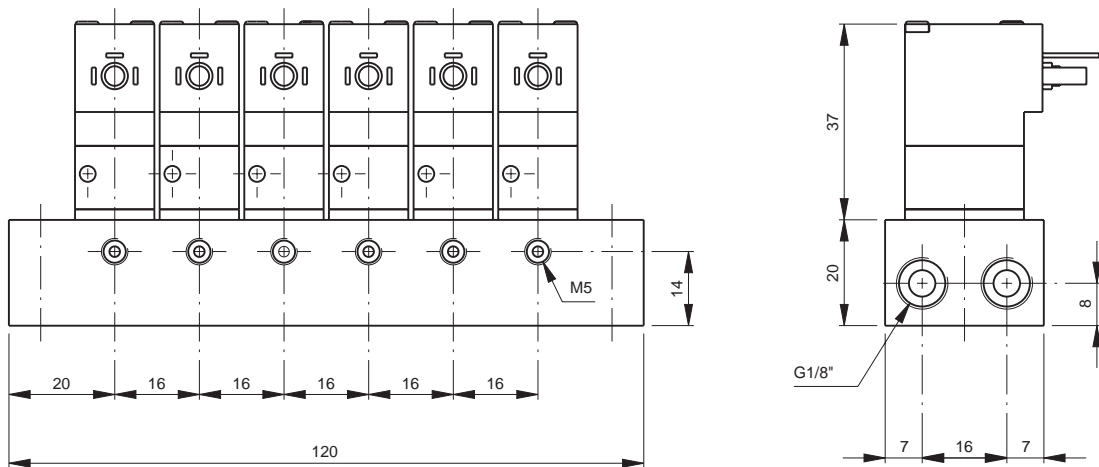


Manifold block with directly operated 3/2-way solenoid valves, normally closed, actuated by permanent signal.

Power consumption: 1,9 W

Available with solenoid operators 24 V = or 230 V ~.

Valves are generally equipped with manual override.



Ports: M 5, air flow: 25 NI/min.

Type	Valves	Weight
MD 310-02	2	0,14 kg
MD 310-03	3	0,22 kg
MD 310-04	4	0,28 kg
MD 310-05	5	0,34 kg
MD 310-06	6	0,40 kg
MD 310-08	8	0,56 kg
MD 310-10	10	0,68 kg
MD 310-12	12	0,80 kg