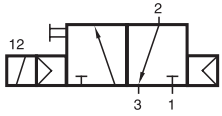
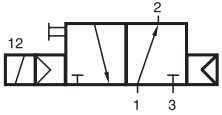


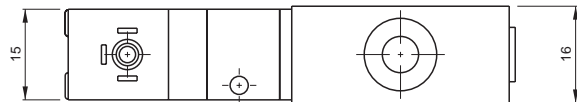
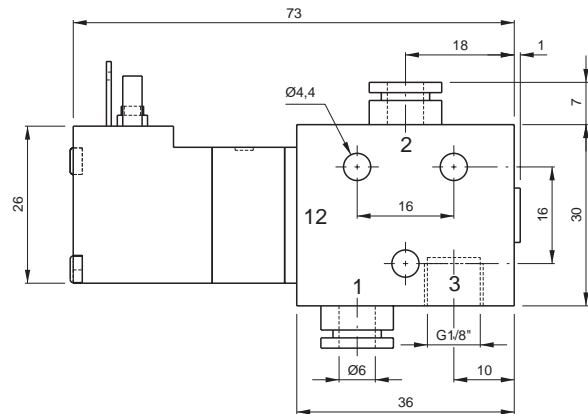
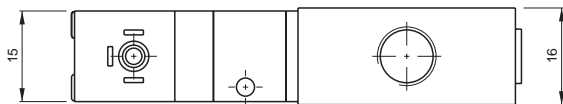
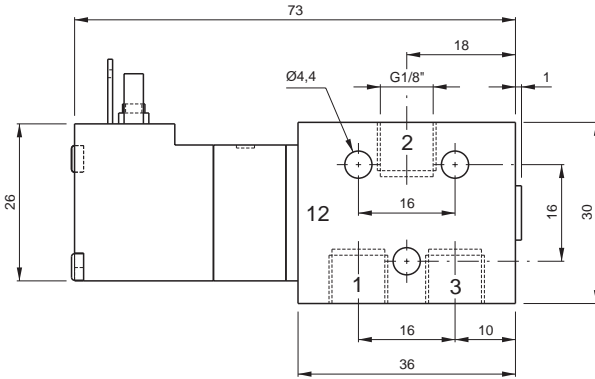
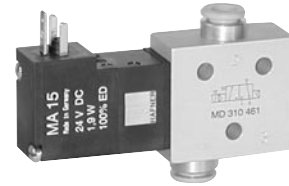
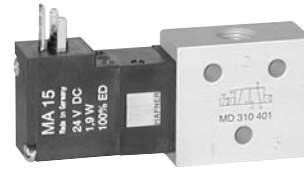
# MD 310 401/MOD 310 401/MD 310 461/MOD 310 461



MD 310 401  
MD 310 461



MOD 310 401  
MOD 310 461



3/2-way solenoid valve normally closed (MD) or normally open (MOD), with air spring, actuated by permanent signal.

Available with solenoid operators 24 V = or 230 V ~.

Valves are generally equipped with manual override to push.

Type	Function	Width [mm]	Port size 1 and 2	Air flow [l/min]	Operating pressure	Power consumption
MD 310 401	n.c.	16	G 1/8"	450	3-10 bar	1.9 W / 3.6 VA
MD 310 461	n.c.	16	6 mm p.i.f.	450	3-10 bar	1.9 W / 3.6 VA
MOD 310 401	n.o.	16	G 1/8"	450	3-10 bar	1.9 W / 3.6 VA
MOD 310 461	n.o.	16	6 mm p.i.f.	450	3-10 bar	1.9 W / 3.6 VA

## 2.5.1.1.3.