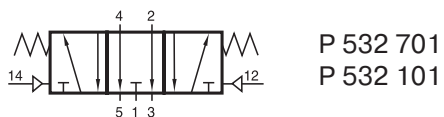
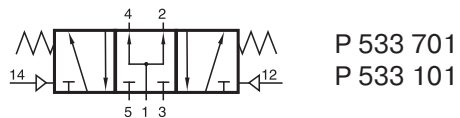


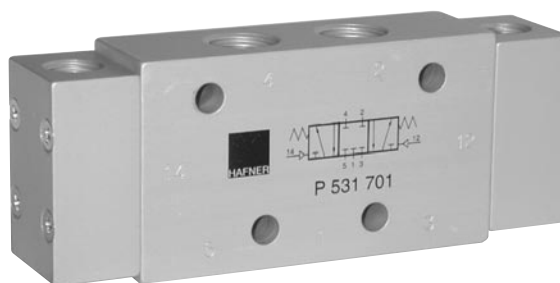
P 531 701
P 531 101



P 532 701
P 532 101



P 533 701
P 533 101



Pneumatically actuated 5/3-way spool valve with spring return to middle position.

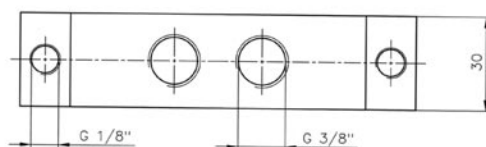
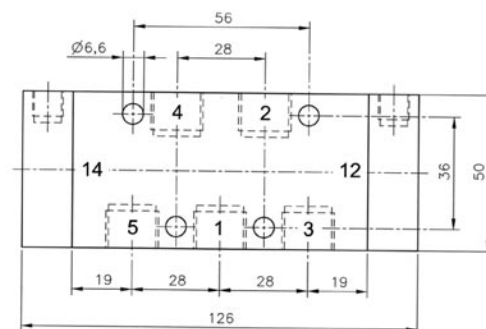
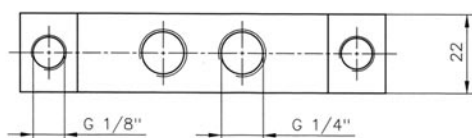
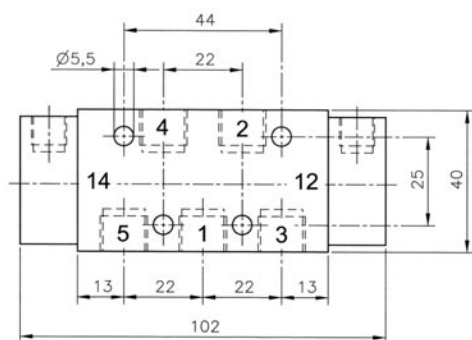
Type 531 Middle position closed

Type 532 Middle position exhausted

Type 533 Middle position pressurized

When ordering, please complete the type number by 1,2 or 3, according to the type in need.

Exhaust can be throttled at 3 and 5.



Type	Port size	Air flow	Operating press.	Actuation press.	Weight
P 53_ 701	G 1/4"	1250 l/min	1 - 10 bar	3 - 10 bar	0,18 kg
P 53_ 101	G 3/8"	2250 l/min	1 - 10 bar	3 - 10 bar	0,41 kg