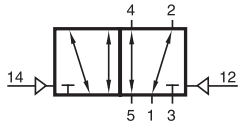
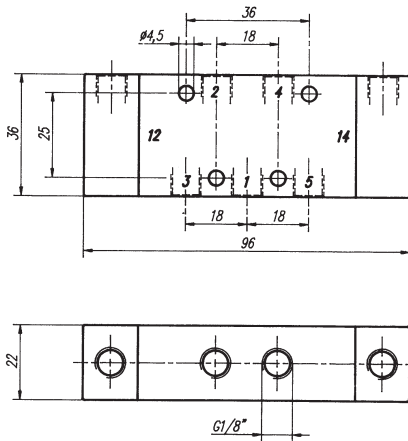
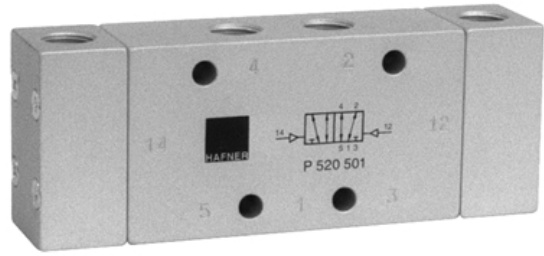


# P 520 501/P 520 801/P 520 121



P 520 501  
P 520 801  
P 520 121

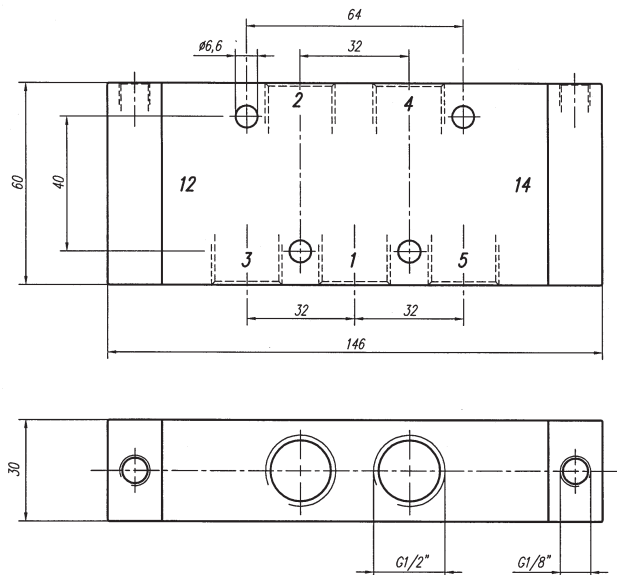
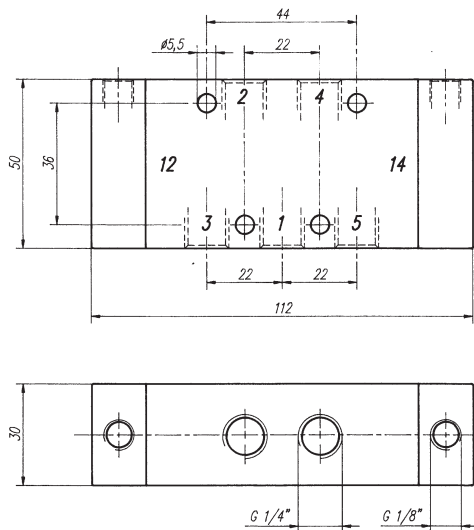


Pneumatically actuated 5/2-way spool valve actuated by impulse. If pressure is applied to 14, the valve is open from 1 to 4 and 2 to 3, 5 is closed.

If pressure is applied to 12, the valve is open from 1 to 2 and 4 to 5.

Position is kept until next pneumatical signal is applied.

Exhaust can be throttled.



Type	Port size	Air flow	Operating press.	Actuating press.	Weight
P 520 501	G 1/8"	650 l/min	1 - 10 bar	2,5 - 10 bar	0,19 kg
P 520 801	G 1/4"	1450 l/min	1 - 10 bar	2,5 - 10 bar	0,43 kg
P 520 121	G 1/2"	3000 l/min	1 - 10 bar	2,5 - 10 bar	0,64 kg

## 2.4.2.6.