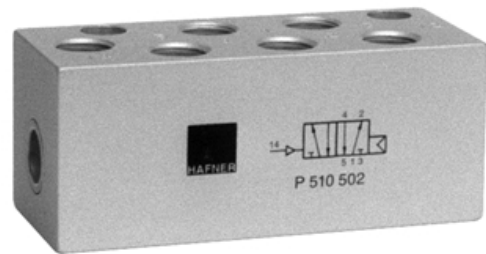


P 510 302  
P 510 502

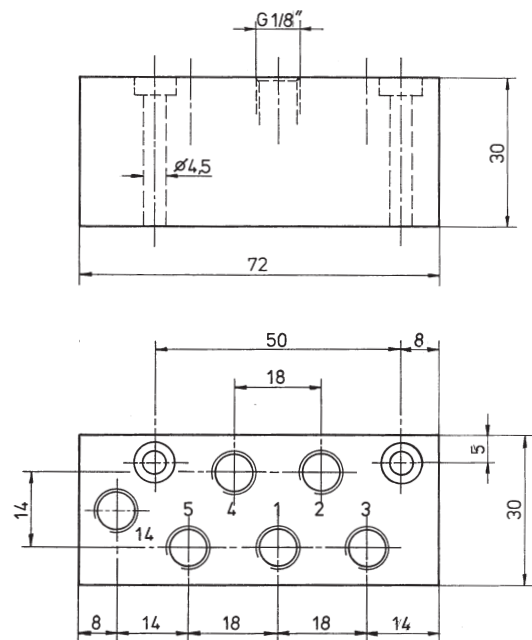
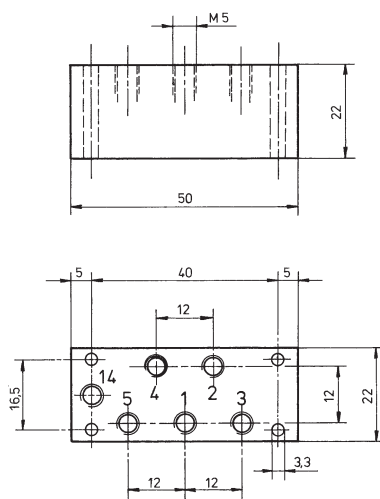


Pneumatically actuated 5/2-way spool valve with air-spring, actuated by permanent signal at 14.

This valve can be equipped with manual override.

Operating pressure and actuation pressure should be at the same level.

Exhaust can be throttled.



Type	Port size	Air flow	Operating press.	Actuation press.	Weight
P 510 302	M 5	180 l/min	2 - 10 bar	the same	0,07 kg
P 510 502	G 1/8"	650 l/min	2 - 10 bar	the same	0,17 kg