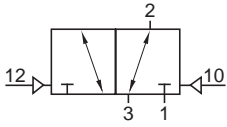
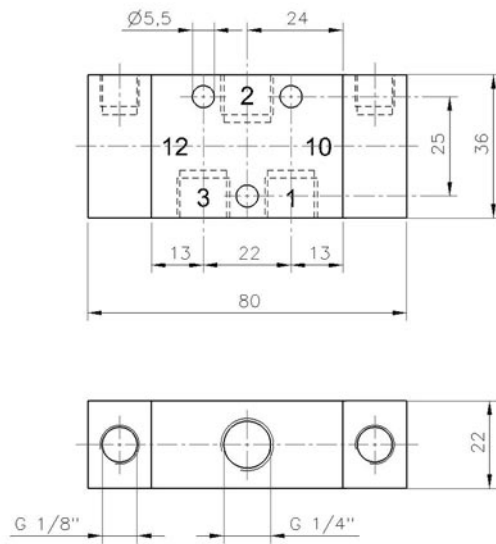
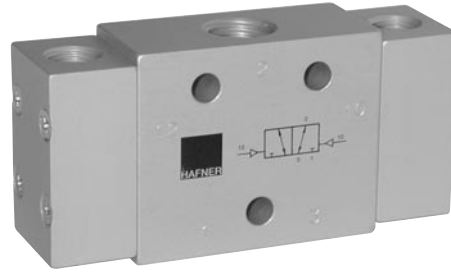


P 320 701/P 320 101



P 320 701
P 320 101

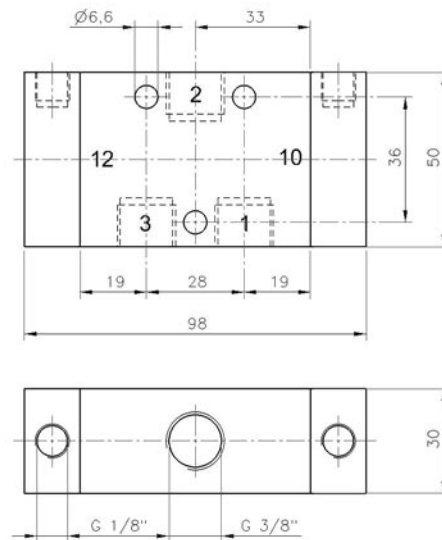


Pneumatically actuated 3/2-way spool valve actuated by impulse.

If pressure is applied to 12, the valve is open from 1 to 2 and 3 is blocked; if pressure is applied at 10, the valve is open from 2 to 3.

Position is kept until next pneumatical signal is applied.

Exhaust can be throttled.



Type	Port size	Air flow	Operating press.	Actuation press.	Weight
P 320 701	G 1/4"	1250 l/min	2 - 10 bar	the same	0,15 kg
P 320 101	G 3/8"	2250 l/min	2 - 10 bar	the same	0,32 kg