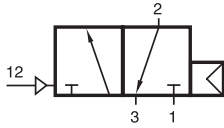


# P 310 701/P 310 101



P 310 701  
P 310 101

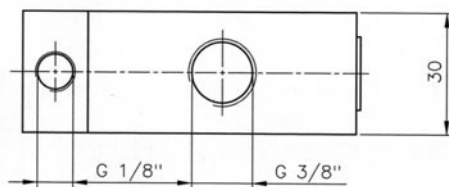
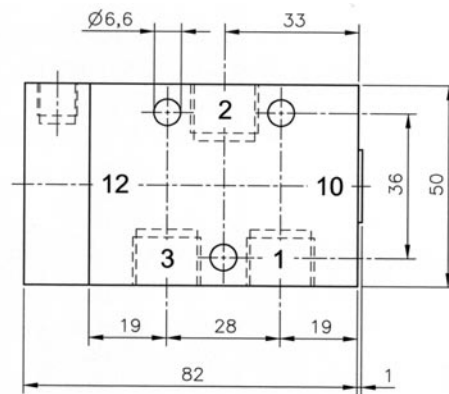
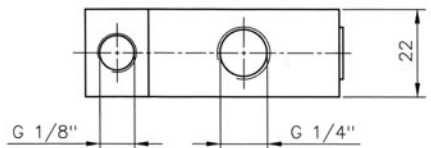
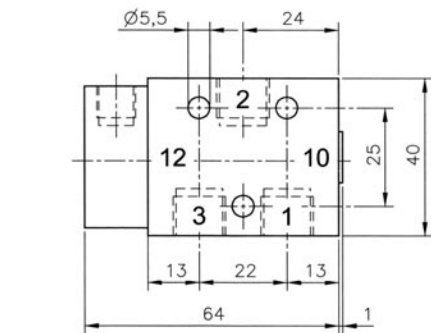


Pneumatically actuated 3/2-way spool valve with air spring return.

If pressure is attached to port 1, the function is normally closed. If pressure is applied to port 3, the function is normally open. Do not attach pressure at port 2.

Exhaust can be throttled.

Operating pressure and actuation pressure should be at the same level.



Type	Port size	Air flow	Operating press.	Actuation press.	Weight
P 310 701	G 1/4"	1250 l/min	2 - 10 bar	the same	0,12 kg
P 310 101	G 3/8"	2250 l/min	2 - 10 bar	the same	0,26 kg

## 2.4.1.3.