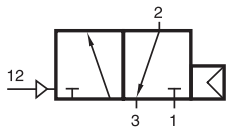


# PD 310 401



PD 310 401

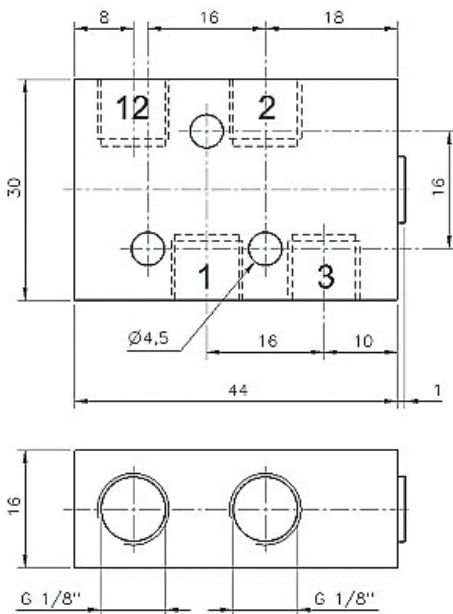


Pneumatically actuated 3/2-way spool valve with air spring return.

If pressure is attached to port 1, the function is normally closed. If pressure is applied to port 3, the function is normally open. Do not attach pressure at port 2.

Exhaust can be throttled.

Operating pressure and actuation pressure should be at the same level.



Type	Port size	Air flow	Operating press.	Actuation press.	Weight
PD 310 401	G 1/8"	450 l/min	2 - 10 bar	the same	0,05 kg