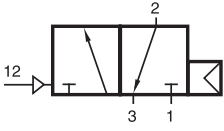


P 310 302/P 310 502



P 310 302
P 310 502



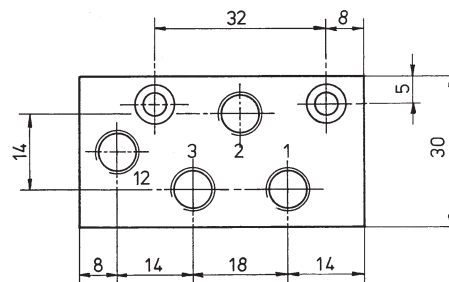
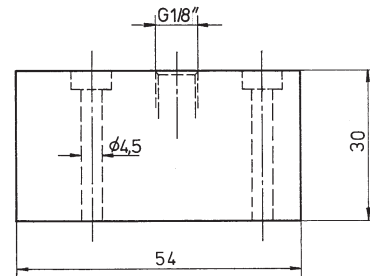
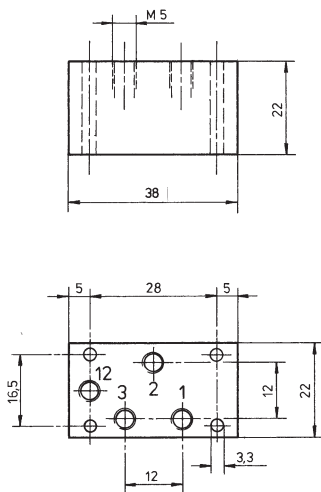
Pneumatically actuated 3/2-way spool valve with air spring, actuated by permanent signal.

If pressure is attached to port 1, the function is normally closed, if pressure is attached to port 3, the function is normally open. Do not attach pressure to 2.

Operating pressure and actuation pressure should be at the same level.

This valve can be equipped with manual override.

Exhaust can be throttled.



Type	Port size	Air flow	Operating press.	Actuation press.	Weight
P 310 302	M 5	180 l/min	2 - 10 bar	the same	0,06 kg
P 310 502	G 1/8"	650 l/min	2 - 10 bar	the same	0,14 kg

2.4.1.1.