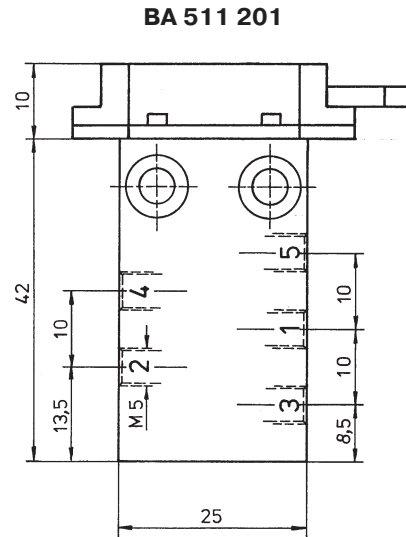
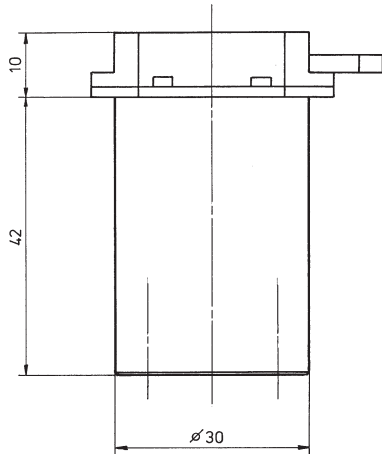
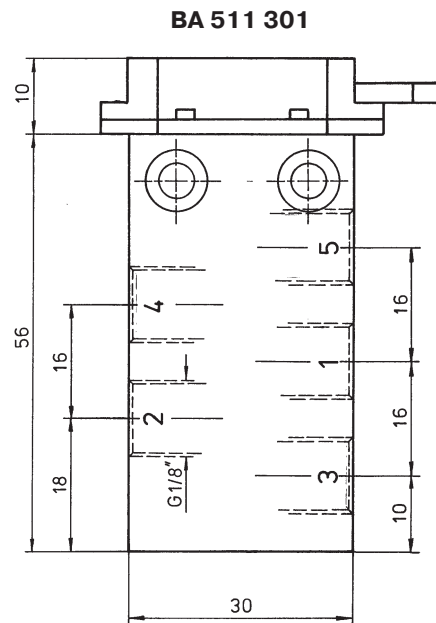


**BA 511 202**



**BA 511 201**



**BA 511 301**

5/2-way spool valve with mechanical spring; for panel mounting.

Actuating elements are displayed on page 2.2.3.

Exhaust can be throttled.

| Type       | Port size | Air flow  | Operating press. | Actuating force | Weght    |
|------------|-----------|-----------|------------------|-----------------|----------|
| BA 511 201 | M 5       | 125 l/min | 0 - 10 bar       | 14 N            | 0,053 kg |
| BA 511 202 | M 5       | 125 l/min | 0 - 10 bar       | 14 N            | 0,092 kg |
| BA 511 301 | G 1/8"    | 280 l/min | 0 - 10 bar       | 14 N            | 0,075 kg |